

# COLUMBIA

## WINCHES & HOISTS

Manufactured by Allied Power Products, Inc.

**AC ELECTRIC HOISTS**  
**UP TO 2000 LBS. CAPACITY**

**HD**  
SERIES



### STANDARD FEATURES

- Rated for hoisting loads vertically
- Automatic, load suspending braking system
- 115/230 VAC 1Ø TEFC brakemotor
- Permanently lubed, 3-stage planetary geartrain
- Simple installation at any angle
- NEMA 12 UL listed controls

Custom designs are available to meet your exact requirements for any lifting, pulling or positioning application with pneumatic, hydraulic, electric and self-contained power sources.

### OPTIONS

- Low-voltage controls
- Variable speed controls
- Washdown, marine and explosion-proof ratings
- Lagged, grooved and divided drums
- Cable tensioners
- Strap drum conversions
- AutoAdvance Line Spoolers
- I-Beam trolleys, Hammerhead systems
- Quick-mount brackets
- Wall-mount control stations
- Wire rope, sheaves, snatch blocks and other rigging

**CAUTION:** The final determination as to the suitability of this product for any purpose is solely that of the user. Columbia products are not to be used to lift people or to lift anything over people.

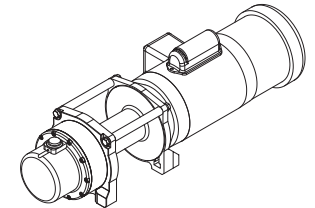
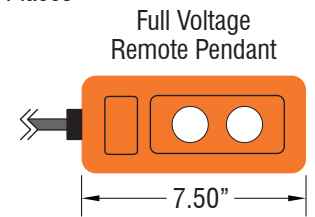
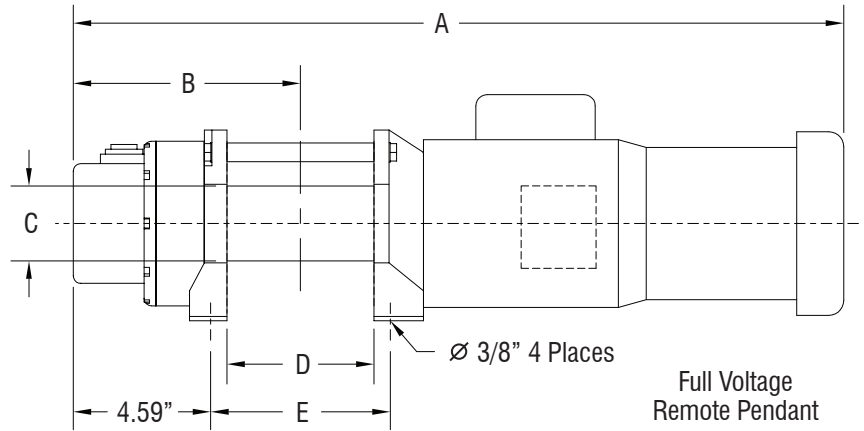
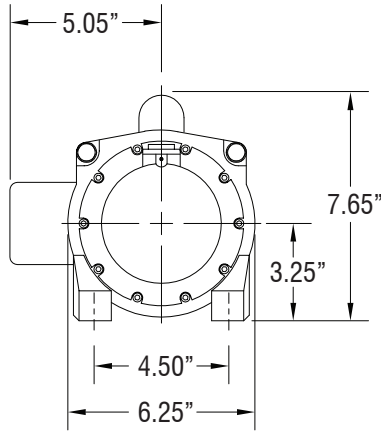
**alliedpower.com**  
D00110A

Distributed by:  
**ALLIED POWER PRODUCTS, INC.**

**THE WINCH & HOIST SPECIALISTS**  
6590 SW FALLBROOK PLACE, BEAVERTON, OR 97008  
(503) 626-0654 FAX (503) 646-1996

## DIMENSIONAL DATA

All measurements are shown in inches.



Drum Size	Dimensions (Inches)					Typical Weight	Wire Rope Capacity		
	A	B	C	D	E		3/16"	1/4"	5/16"
-11	22.8"	6.59"	3.5"	2.7"	4.0"	48 LBS	99'	-	-
-01	24.8"	7.59"	2.5"	5.0"	6.0"	51 LBS	213'	120'	84'
-02	28.8"	9.59"	2.5"	9.0"	10.0"	55 LBS	384'	217'	147'

## PERFORMANCE

Model	Motor HP		Power Input		Gear Ratio	Calculated Performance					
	HP	RPM	Voltage	Ø		First Layer		Mean Drum		Full Drum	
						LBS	FPM	LBS	FPM	LBS	FPM
HD670 <sup>1</sup>	0.5	3450	115/230	1Ø	113:1	670	29.5	567	34.7	493	39.9
HD900 <sup>1</sup>	0.5	3450	115/230	1Ø	156:1	900	21.3	782	25.1	680	28.9
HD1300 <sup>1</sup>	0.5	3450	115/230	1Ø	216:1	1300	15.4	1083	18.1	942	20.9
HD1000 <sup>2</sup>	0.5	3450	115/230	1Ø	113:1	1000	22.5	766	31.1	599	39.8
HD1450 <sup>2</sup>	0.5	3450	115/230	1Ø	156:1	1450	16.3	1057	22.6	827	28.8
HD2000 <sup>2</sup>	0.5	3450	115/230	1Ø	216:1	2000	11.8	1464	16.3	1146	20.8

<sup>1</sup> -11 drum

<sup>2</sup> -01 and -02 drums

Performance based on intermittent duty cycles.

**CAUTION:** The final determination as to the suitability of this product for any purpose is solely that of the user. Columbia products are not to be used to lift people or to lift anything over people.