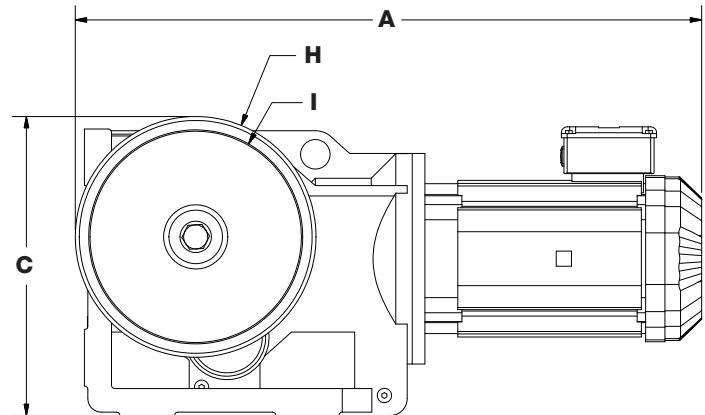
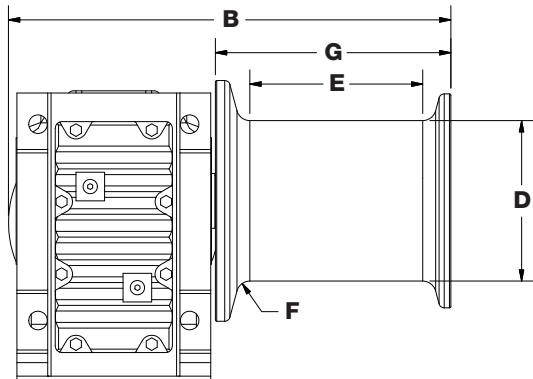


## DIMENSIONAL DATA

All measurements are shown in inches.



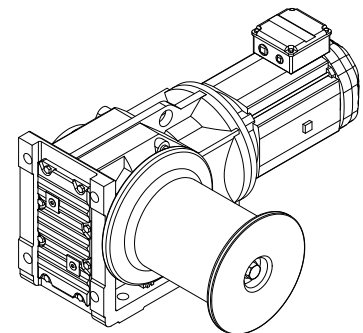
Model	Length A	Width B	Height C	Drum Core D	Drum Face E	Drum Radius F	Drum Height G	Drum Base H	Drum Top I
C1000	23.04"	16.81"	11.59"	Ø6.00	6.31	R.50	8.63	Ø9.00	Ø8.00
C2000	24.36"	16.81"	11.59"	Ø6.00	6.31	R.50	8.63	Ø9.00	Ø8.00
C3000	29.27"	20.67"	13.97"	Ø7.50	8.08	R.63	11.00	Ø11.25	Ø10.00
C4000	29.27"	20.67"	13.97"	Ø7.50	8.08	R.63	11.00	Ø11.25	Ø10.00
C7000	37.56"	26.90"	19.80"	Ø9.00	9.47	R.75	13.00	Ø13.50	Ø12.00
C10000	38.27"	26.90"	19.80"	Ø9.00	9.47	R.75	13.00	Ø13.50	Ø12.00

Typical dimensions shown; gearmotors can be rotated in 90° increments.

## PERFORMANCE

Model	Motor HP	Calculated Performance	
		LBS	FPM
C1000	1	1,000	33
C2000	2	2,000	31
C3000	3	3,000	32
C4000	4	4,000	32
C7000	7.5	7,000	34
C10000	10	10,000	34

Performance based on 230/460 3Ø 60 Hz input power; other voltages available.



**CAUTION:** The final determination as to the suitability of this product for any purpose is solely that of the user. Columbia products are not to be used to lift people or to lift anything over people.