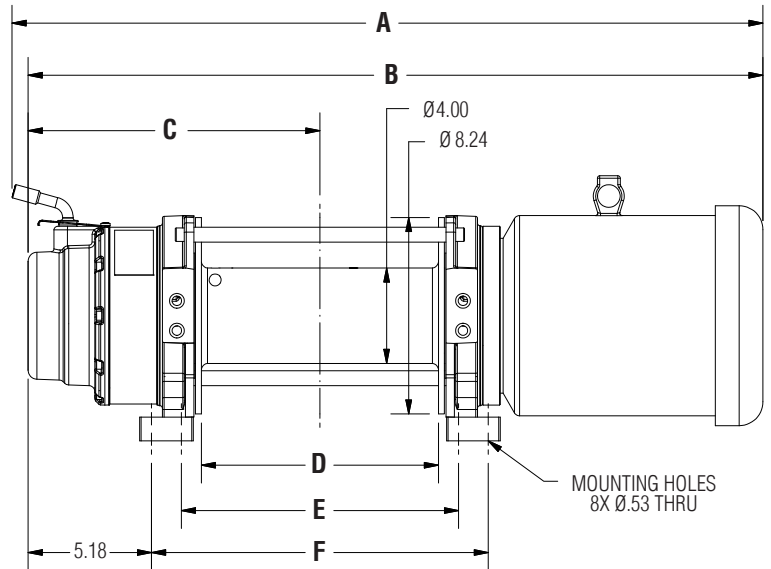
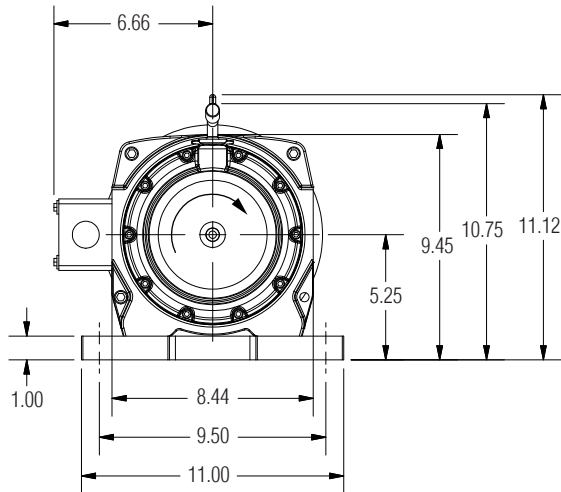
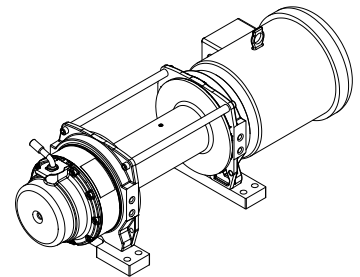


DIMENSIONAL DATA

All measurements are shown in inches.



Drum Size	Dimensions (Inches)						Typical Weight	Wire Rope Capacity (1/2")
	A	B	C	D	E	F		
-01	24.49	28.82	11.24	7.94	9.63	12.13	167 LBS	67'
-02	31.49	30.82	12.24	9.94	11.63	14.13	170 LBS	84'
-03	33.99	33.32	13.49	12.44	14.13	16.63	180 LBS	105'



PERFORMANCE

Model	Motor		Power Input		Gear Ratio	Calculated Performance					
	HP	RPM	Voltage	Ø		First Layer		Mean Drum		Full Drum	
						LBS	FPM	LBS	FPM	LBS	FPM
WK17000	3.0	1200	230/460	3Ø	315:1	17,000	4.3	14,257	5.1	12,275	6.0

Performance based on intermittent duty cycles.

CAUTION: The final determination as to the suitability of this product for any purpose is solely that of the user. Columbia products are not to be used to lift people or to lift anything over people.