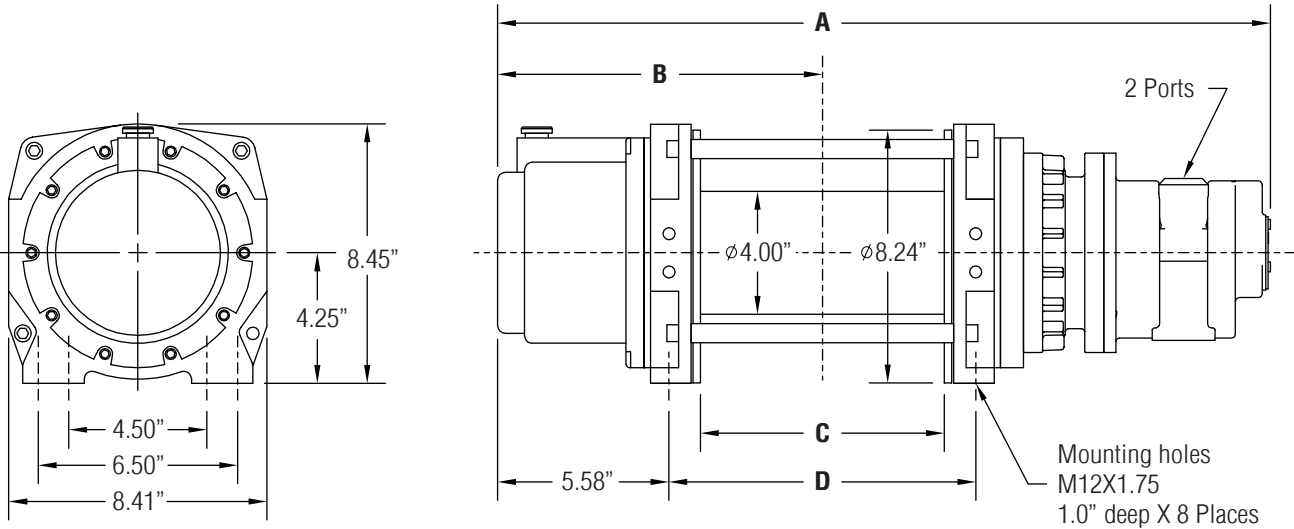


DIMENSIONAL DATA

All measurements are shown in inches.



Drum Size	Dimensions (Inches)						Typical Weight			Wire Rope Capacity			Motor (HP)	Port Size
	A			B	C	D	2.5 HP	4.25 HP	6.5 HP	1/4"	5/16"	3/8"		
	2.5 HP	4.25 HP	6.5 HP											
-01	23.8"	25.2"	25.8"	10.57"	8.0"	10.0"	85 LBS	95 LBS	100 LBS	326'	228'	159'	2.5	1/2" NPT
-02	25.8"	27.2"	27.8"	11.57"	10.0"	12.0"	88 LBS	98 LBS	103 LBS	407'	285'	198'	4.25	3/4" NPT
-03	28.3"	29.7"	30.3"	12.82"	12.5"	14.5"	98 LBS	108 LBS	113 LBS	509'	356'	248'	6.5	1" NPT

PERFORMANCE

Model	HP	Power Input		Gear Ratio	Calculated Performance					
		PSI	SCFM		First Layer		Mean Drum		Full Drum	
					LBS	FPM	LBS	FPM	LBS	FPM
HF550-P	4.25	65	110	27:1	550	127.3	421	165.0	343	202.8
HF1200-P	6.5	75	190	27:1	1,200	127.3	905	165.0	736	202.8
HF1750-P	2.5	70	75	164:1	1,750	27.9	1,376	36.2	1,120	44.5
HF3150-P	4.25	65	110	164:1	3,150	21.0	2,457	27.2	1,999	33.4

Performance based on intermittent duty cycles.

CAUTION: The final determination as to the suitability of this product for any purpose is solely that of the user. Columbia products are not to be used to lift people or to lift anything over people.