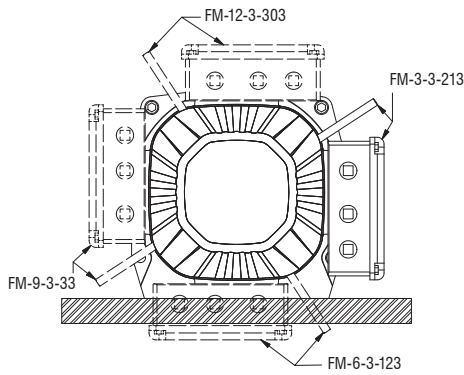
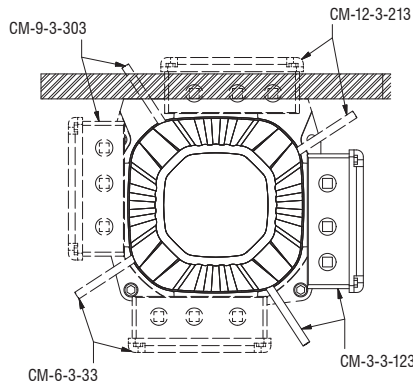


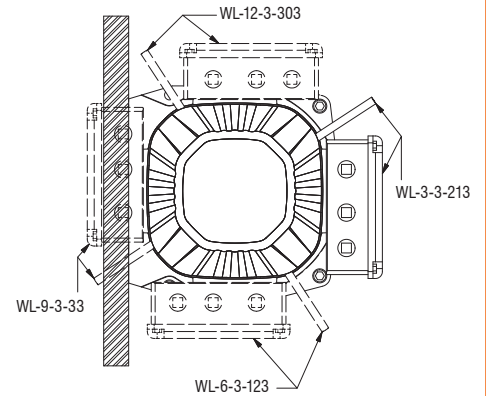
# MOTOR POSITION GUIDE



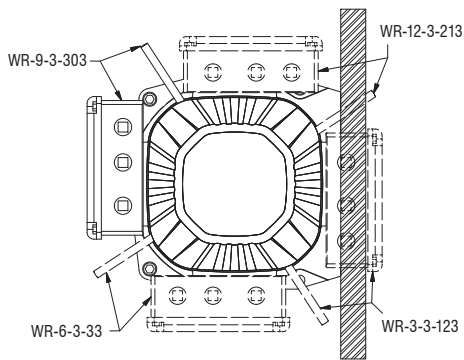
**FLOOR MOUNT (FM)**



**CEILING MOUNT (CM)**

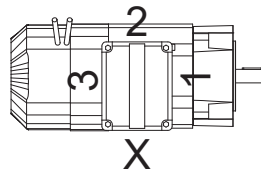


**WALL MOUNT LEFT (WL)**

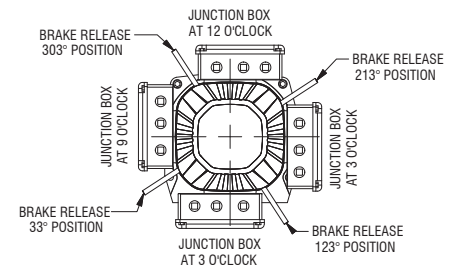


**WALL MOUNT RIGHT (WR)**

CABLE ENTRY POSITION  
WHEN JUNCTION BOX IS AT 3 O'CLOCK



BRAKE RELEASE HANDLE SHOWN IN USE  
(NORMALLY STOWED IN CLIPS ON MOTOR)



**SAMPLE  
MODEL CODE**

**CM-6-3-123**

**A B C D**

**[A]**  
MOUNTING  
CONFIGURATION

**FM:** FLOOR MOUNT  
**CM:** CEILING MOUNT  
**WL:** WALL MOUNT LEFT  
**WR:** WALL MOUNT RIGHT

**[C]**  
CABLE ENTRY  
LOCATION

**X:** FACING DOWN WHEN BOX IS VERTICAL  
**1:** FACING TOWARDS MOTOR SHAFT  
**2:** FACING UP WHEN BOX IS VERTICAL  
**3:** FACING AWAY FROM MOTOR SHAFT

**[B]**  
JUNCTION BOX  
POSITION

**12:** 12 O'CLOCK (TOP)  
**3:** 3 O'CLOCK (RIGHT)  
**6:** 6 O'CLOCK (BOTTOM)  
**9:** 9 O'CLOCK (LEFT)

**[D]**  
BRAKE RELEASE  
HANDLE LOCATION

**33:** 33° POSITION  
**123:** 123° POSITION  
**213:** 213° POSITION  
**303:** 303° POSITION

**NOTE:** [1] STANDARD (TYPICAL) CONFIGURATION: FM-3-3-213 [2] DRAIN HOLE (IF PRESENT) AT 6 O'CLOCK

**CAUTION:** The final determination as to the suitability of this product for any purpose is solely that of the user. Columbia products are not to be used to lift people or to lift anything over people.

Distributed by:

**ALLIED POWER PRODUCTS, INC.**

THE WINCH & HOIST SPECIALISTS

6590 SW FALLBROOK PLACE, BEAVERTON, OR 97008  
(503) 626-0654 FAX (503) 646-1996