

CARRY ONE TON IN ONE HAND!

You can pick up 2,000 lbs of lifting capacity with one hand when you select one of our HD Series hoists or winches. With weights as low as 30 pounds – including the carry handle and base plate – these units offer unequalled portability and ease of use wherever you are working.

Choose between AC electric and pneumatic power and then select from options such as different drum sizes and wire rope tensioners to meet your specific application needs.



Shown with AC brakemotor.
Pneumatic models also available.

Standard Hoist Features

- Automatic braking system
- Totally enclosed planetary geartrains; lubricated with grease for years of maintenance-free service
- Completely enclosed construction – no exposed gears, bearings or shaft surfaces
- Low profile, compact design to fit in tight spaces
- Simple installation at any angle
- TEFC, UL-listed motors on AC powered units
- Dependable, long-life motors on all units

Options

- Explosion-proof ratings
- Purpose-built control packages
- Upgrades for increased weather resistance
- Cable tensioning plates, four-roller fairleads, and spooling devices
- Manual override for operation during a power failure
- Additional options and upgrades available upon request

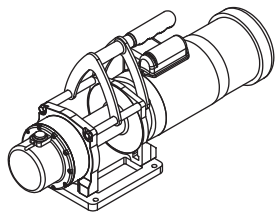
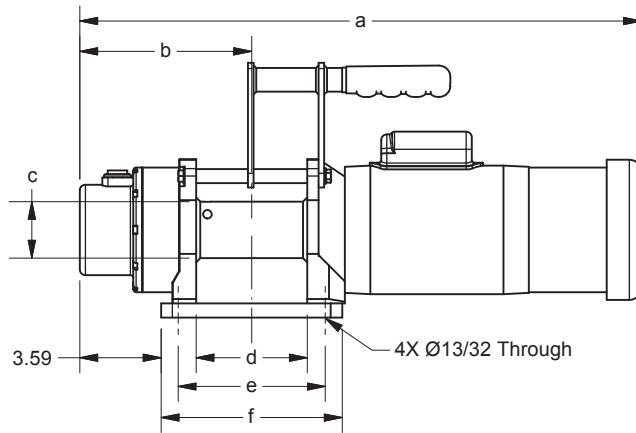
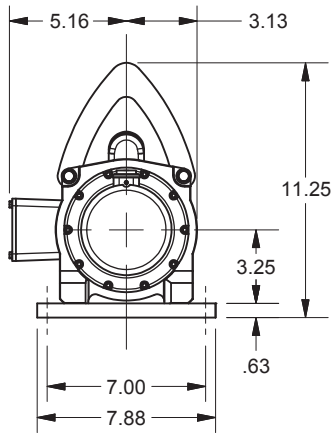
www.columbiawinch.com

CAUTION: The final determination as to the suitability of this product for any purpose is solely that of the user. Columbia products are not to be used to lift people or to lift anything over people.

ALLIED POWER PRODUCTS, INC.

THE WINCH & HOIST SPECIALISTS
6590 SW Fallbrook Place, Beaverton, OR 97008
(503) 626-0654 Fax (503) 646-1996
www.alliedpower.com

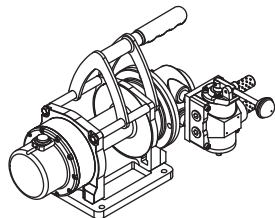
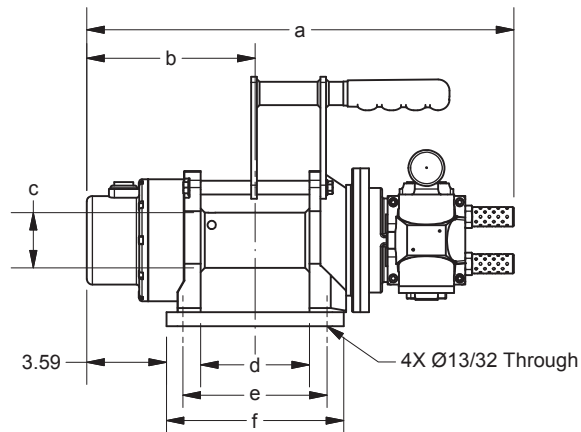
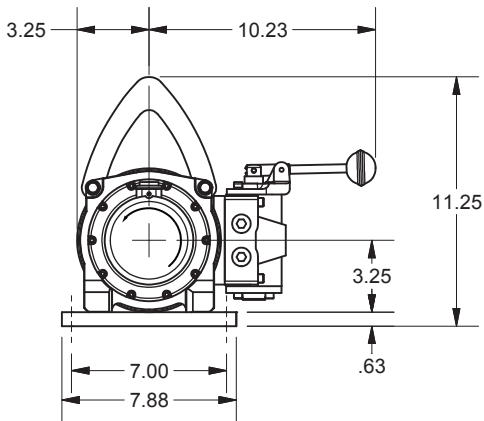
AC ELECTRIC



| Drum Size | Dimensions (IN) | | | | | | Typical Weight |
|-----------|-----------------|-----|-----|-----|------|------|----------------|
| | a | b | c | d | e | f | |
| -11 | 22.8 | 6.6 | 3.5 | 2.7 | 4.5 | 6.0 | 44 lbs |
| -01 | 24.8 | 7.6 | 2.5 | 4.9 | 6.5 | 8.0 | 47 lbs |
| -02 | 28.8 | 9.6 | 2.5 | 8.9 | 10.5 | 12.0 | 51 lbs |

-11 drum capacities to 1300 lbs; -01 and -02 drum capacities to 2000 lbs.

PNEUMATIC



| Drum Size | Dimensions (IN) | | | | | | Typical Weight |
|-----------|-----------------|-----|-----|-----|------|-----|----------------|
| | a | b | c | d | e | c | |
| -11 | 17.3 | 6.6 | 3.5 | 2.7 | 4.5 | 3.5 | 30 lbs |
| -01 | 19.3 | 7.6 | 2.5 | 4.9 | 6.5 | 2.5 | 33 lbs |
| -02 | 23.3 | 9.6 | 2.5 | 8.9 | 10.5 | 2.5 | 37 lbs |

-11 drum capacities to 900 lbs; -01 and -02 drum capacities to 2000 lbs.

www.columbiawinch.com

CAUTION: The final determination as to the suitability of this product for any purpose is solely that of the user. Columbia products are not to be used to lift people or to lift anything over people.

ALLIED POWER PRODUCTS, INC.

THE WINCH & HOIST SPECIALISTS
6590 SW Fallbrook Place, Beaverton, OR 97008
(503) 626-0654 Fax (503) 646-1996
www.alliedpower.com