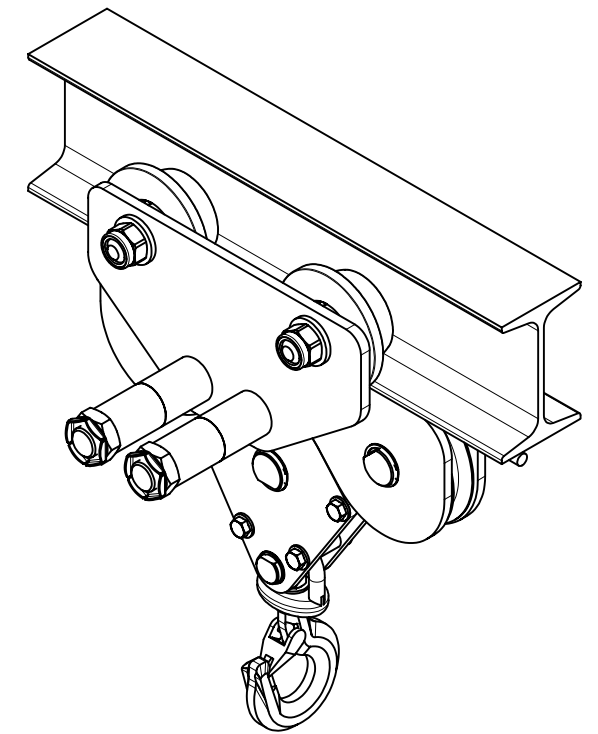
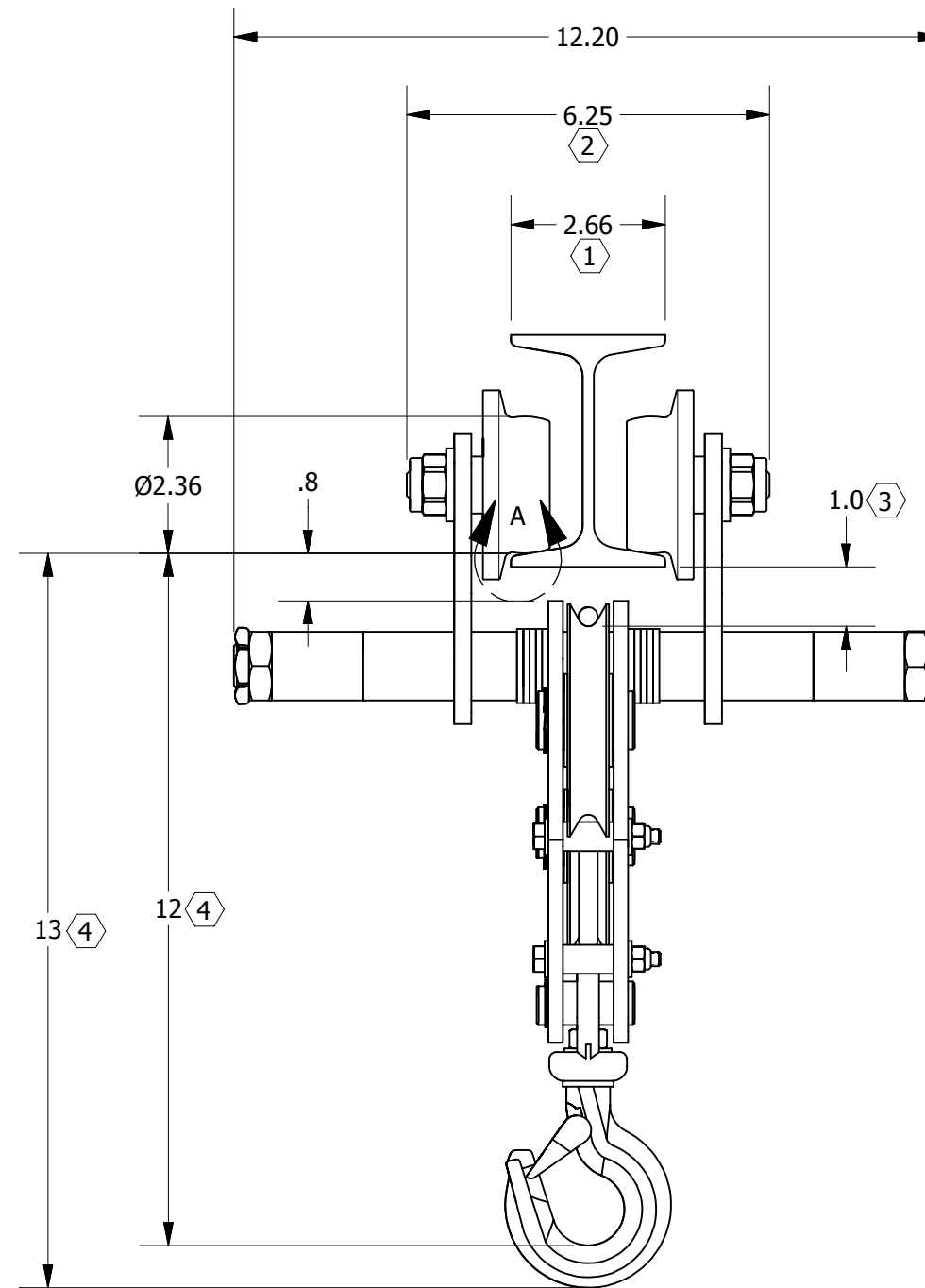
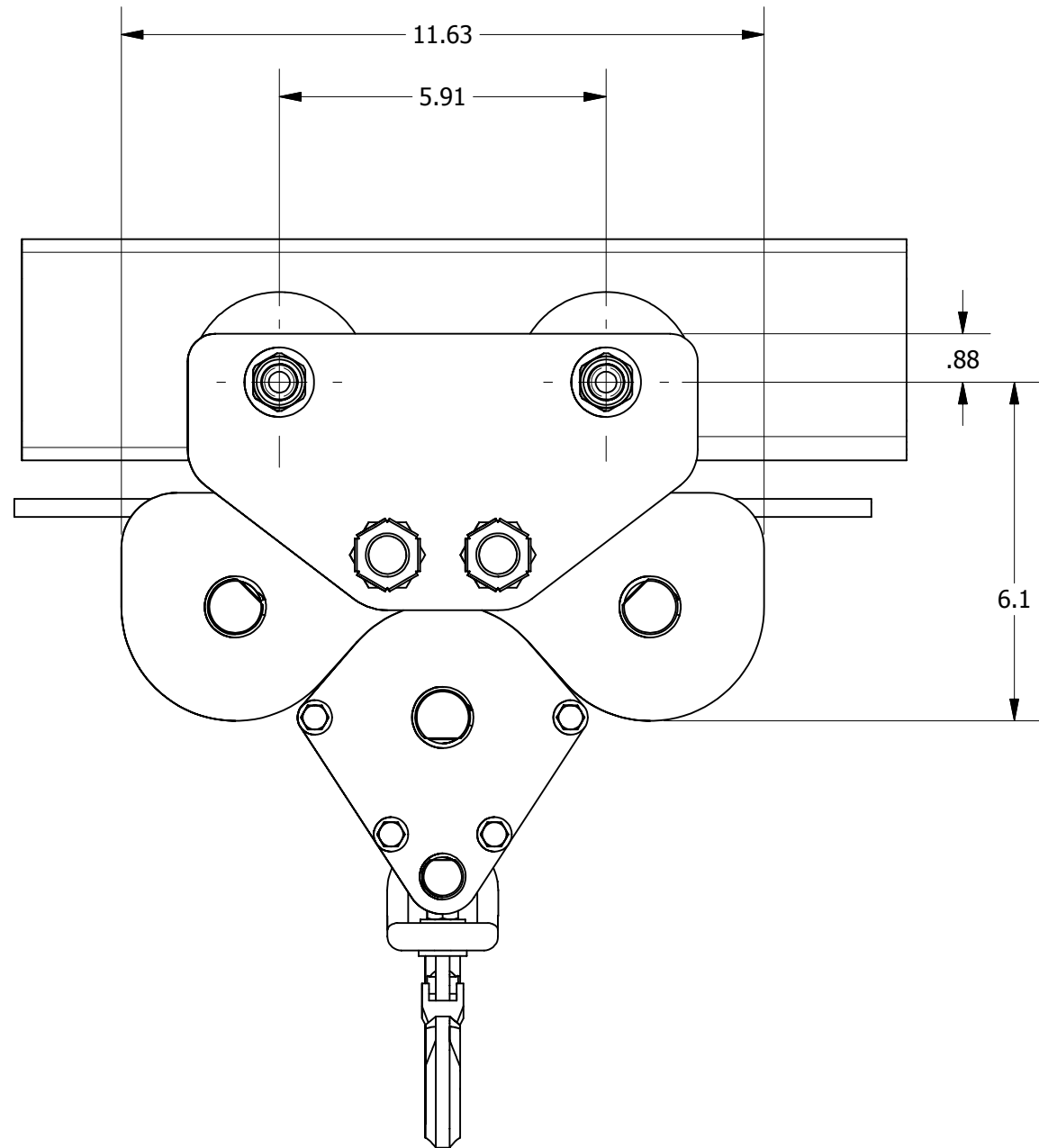


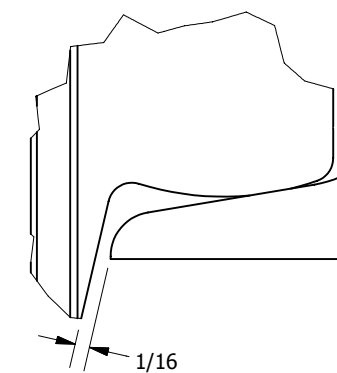
Hammerhead Trolley Dimensions
1-Ton Working Load



NOTES

- ① Minimum flange width; see table for acceptable range of I-beam width.
- ② Dimension varies with flange width; shown with S4X7.7 I-beam.
- ③ Dimension varies with flange thickness; shown with S4X7.7 I-beam.
- ④ Dimension when fallblock is fully raised.
- 5. Compatible with all standard and most wide flange beams.

Working Load	Wire Rope Sizes	Minimum Beam Height	I-Beam Width	Net Weight (Approx)
2000 lbs.	1/4" or 5/16"	5.0"	2.6"-8.7"	50 lbs.



DETAIL A

ADJUSTMENT ILLUSTRATION & INSTRUCTIONS
 The correct trolley setting is the beam flange width plus approximately 1/16" running clearance on each side of the flange; the clearance should not exceed 3/16".

Move the spacing washers on either side of the trolley side plates to adjust as required.

After adjustment, tighten the trolley pin nuts and locking nuts securely.