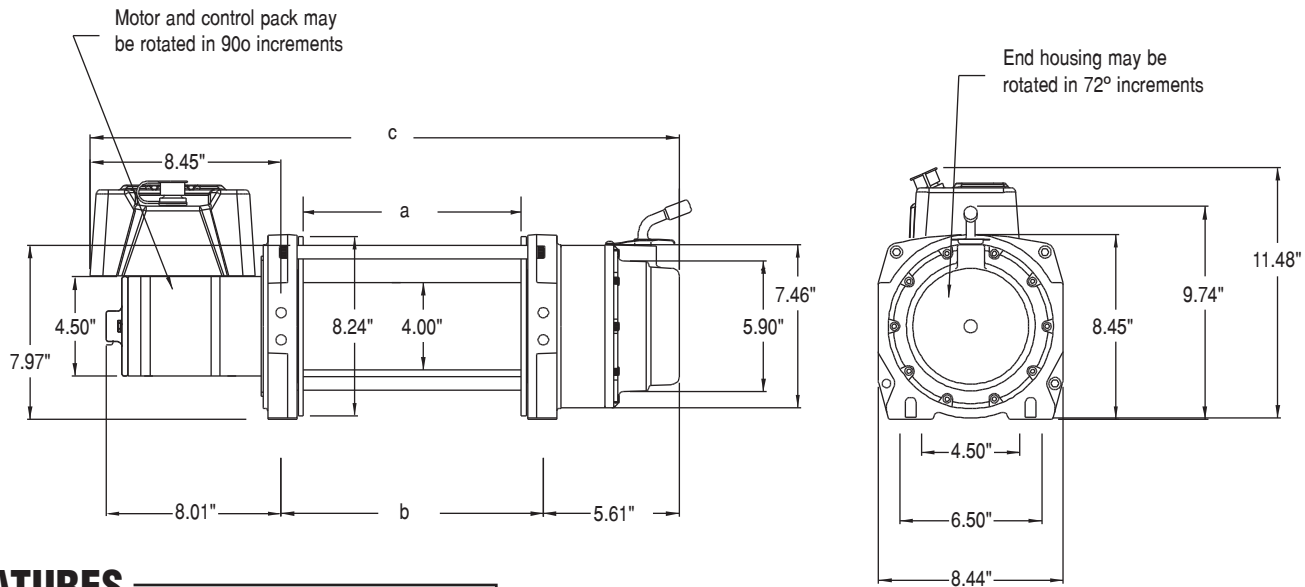


ELECTRIC PLANETARY WINCHES

Series 9 DC

9,000 lbs Capacity



FEATURES

- Freespooling Drum
- 2-Stage Planetary Reduction
- Automatic Disc Brake
- Locking Clutch Lever
- Simple Wire Rope Attachment
- Rated for Winching on Slopes up to 30%

Drum Size	Dimensions			Shipping Weight	Wire Rope Capacity		
	a	b	c		1/4"	5/16"	3/8"
-01	8.0"	10.0"	23.6"	93 lbs	326'	228'	159'
-02	10.0"	12.0"	25.6"	96 lbs	407'	285'	198'
-03	12.5"	14.5"	28.1"	103 lbs	509'	356'	248'

PERFORMANCE

Specifications			Multi-Layer Performance			First Layer Performance		
Motor Type	Motor HP	Gear Ratio	Layer	Load (lbs)	Speed (fpm)	Load (lbs)	Speed (fpm)	Amp Draw
12V	2.5 HP	199:1	1	9000	4.0	0	47.0	70
			2	7670	4.7	3000	13.0	232
			3	6710	5.4	6000	8.0	361
			4	5940	6.1	9000	4.0	450
24V	2.5 HP	199:1	1	9000	5.0	0	51.0	33
			2	7670	5.9	3000	16.0	84
			3	6710	6.7	6000	10.0	125
			4	5940	7.6	9000	5.0	158

Performance based on intermittent duty cycles.

CAUTION: The final determination as to the suitability of this product for any purpose is solely that of the user. These products are not to be used to lift people or to lift anything over people.

ALLIED POWER PRODUCTS, INC.

THE WINCH & HOIST SPECIALISTS

6590 SW Fallbrook Place, Beaverton, OR 97008

(503) 626-0654 Fax (503) 646-1996

www.alliedpower.com