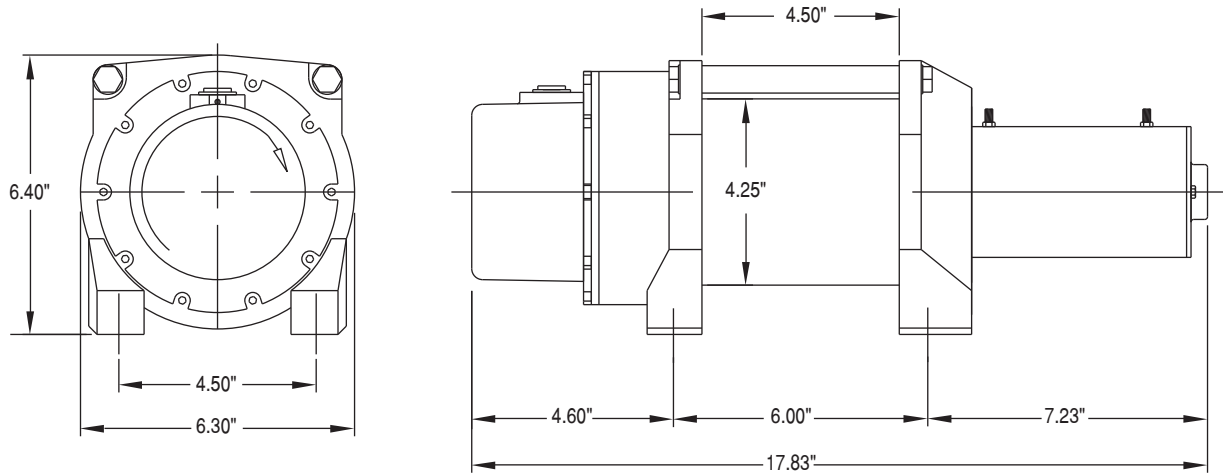


# ELECTRIC PLANETARY HOISTS

## DC2000

## 2,000 lbs Capacity



### FEATURES

- 3-Stage Planetary Reduction
- Simple Wire Rope Attachment
- Compact Frame
- Rated for Hoisting

### Wire Rope Capacity

1/4"  
43'

### PERFORMANCE

Specifications			Multi-Layer Performance			First Layer Performance		
Motor Type	Motor HP	Shipping Weight	Layer	Load (lbs)	Speed (fpm)	Load (lbs)	Speed (fpm)	Amp Draw
12V Wound	2.1	40 lbs	1	2000	15.0	0	38.0	75
			2	1800	17.0	1000	22.0	148
			3	1636	19.0	1500	19.0	170
			----	----	----	2000	15.0	200
24V Wound	2.1	40 lbs	1	2000	20.0	0	46.0	40
			2	1800	22.0	1000	27.0	74
			3	1636	25.0	1500	24.0	90
			----	----	----	2000	20.0	105
12V	1.8	40 lbs	1	2000	13.7	0	17.4	35
			2	1800	15.1	1000	15.7	74
			3	1636	17.1	1500	14.6	102
			----	----	----	2000	13.7	130
24V	1.8	40 lbs	1	2000	13.7	0	17.4	20
			2	1800	15.1	1000	15.7	40
			3	1636	17.1	1500	14.6	58
			----	----	----	2000	13.7	75

Performance based on intermittent duty cycles.

**CAUTION:** The final determination as to the suitability of this product for any purpose is solely that of the user. These products are not to be used to lift people or to lift anything over people.

**ALLIED POWER PRODUCTS, INC.**

**THE WINCH & HOIST SPECIALISTS**

6590 SW Fallbrook Place, Beaverton, OR 97008

(503) 626-0654 Fax (503) 646-1996

[www.alliedpower.com](http://www.alliedpower.com)